

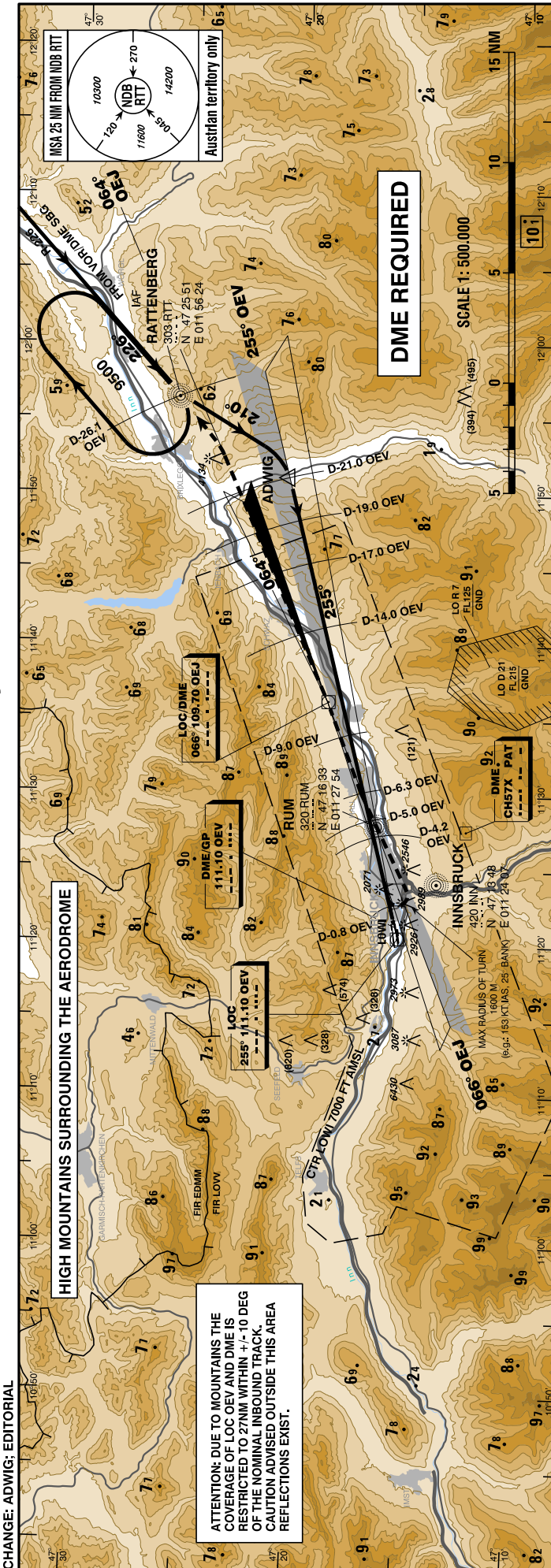
INSTRUMENT
APPROACH
CHART - ICAO

VAR 3° E

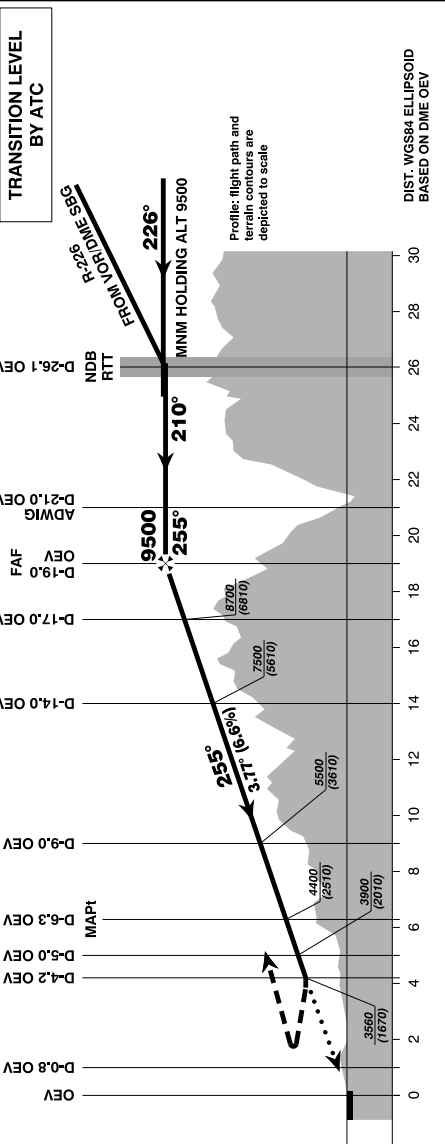
AD ELEV 1907 FT
THR 26 ELEV 1894 FT
HGT RELATED TO THR ELEV

Radar 119.270Mhz
Tower 120.100Mhz
Atis 126.020Mhz

INNSBRUCK
ÖSTERREICH AUSTRIA
SPECIAL LOC/DME PROCEDURE EAST
(3.77 GP available)

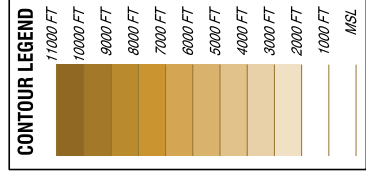


CAUTION:
APPROACH DESCENT
GRADIENT 3.77°



Missed Approach:
Climb on LOC-OEV with MAX GRADIENT.
At D-0.8 OEV turn left and follow QDM 060° in direction to locator RUM and continue on LOC-OEJ (066°/064°) with MAX CLIMB GRADIENT to 9500 FT AMSL, turn left to RTT and hold.

FOR VISUAL PART SEE LOWI AD 2.24-7-1



BEARINGS, TRACKS AND RADIALS ARE MAGNETIC
ALTITUDES, ELEVATIONS AND HEIGHTS ARE IN FEET
DISTANCES ARE IN NM

MDA (MDH) IN FT	MA - CLIMB GRADIENT		REQUIRED FLIGHT VISIBILITY IN THE AREA OF VISUAL OPERATIONS					VISUAL SEGMENT AND CEILING PROCEDURE SEE AD 2.24-7-1									
	INITIAL	FINAL	A	B	C	D	18	17	16	15	14	13	12	11	10	9	8
according special permission This procedure is permissible for special equipped aircraft and requires authorization by Austro Control GmbH.	DME OEV						17.8	16.8	15.8	14.8	13.8	12.8	11.8	10.8	9.8	8.8	7.8
	DIST THR						9100	8700	8300	7900	7500	7100	6700	6300	5900	5500	5100
	ALT (HEIGHT)						(7206)	(6806)	(6406)	(6006)	(5606)	(5206)	(4806)	(4406)	(4006)	(3606)	(3206)