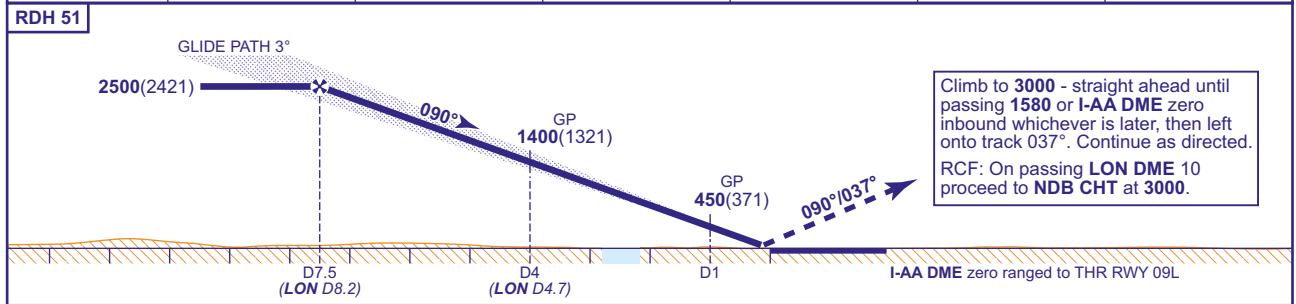
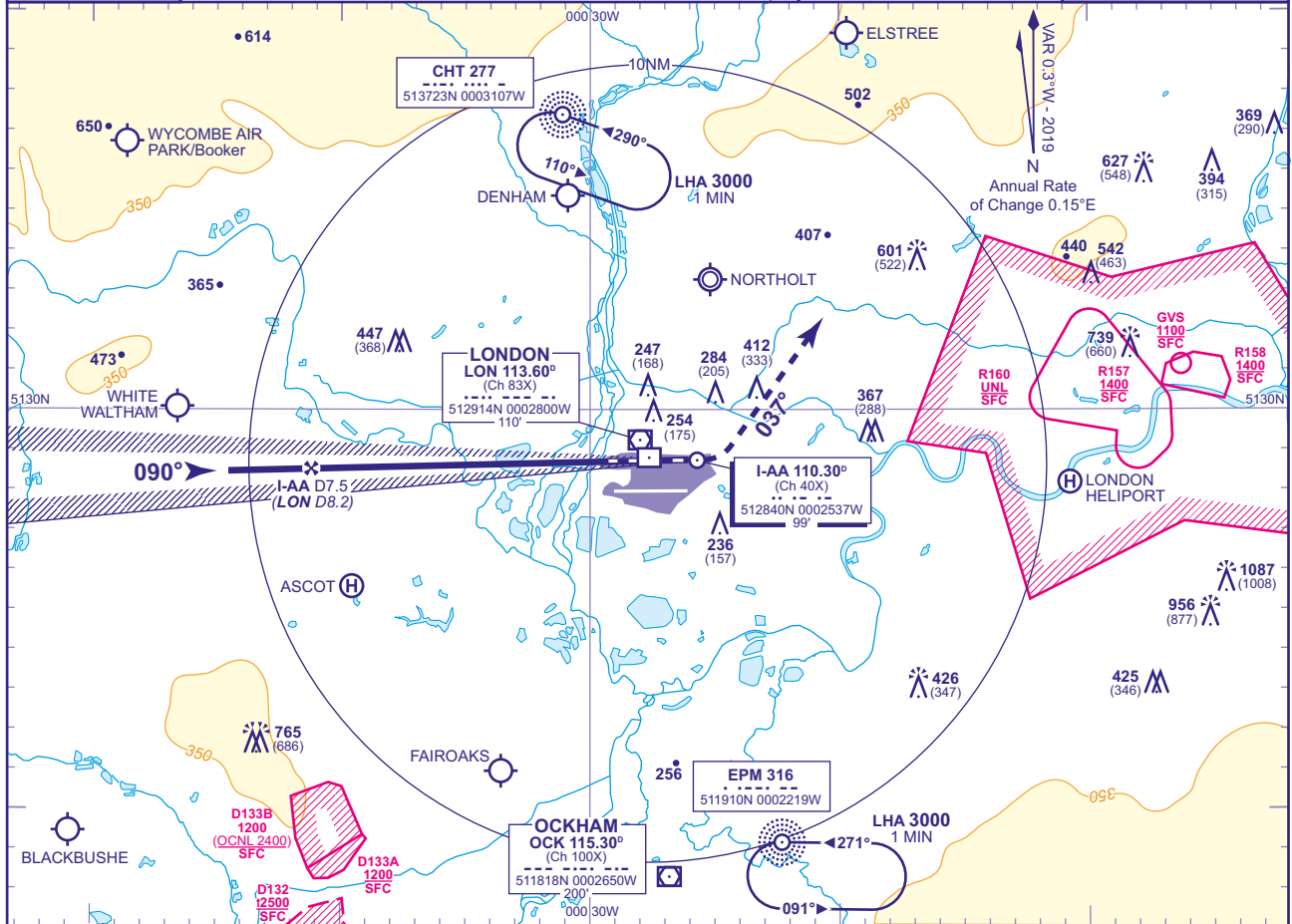


INSTRUMENT APPROACH CHART - ICAO

LONDON/HEATHROW
ILS/DME I-AA
RWY 09L
(ACFT CAT A,B,C,D)

APP 119.730, 120.400, 127.525, 134.980	HEATHROW DIRECTOR	AD ELEVATION	83
TWR 118.505, 118.705, 124.475	HEATHROW TOWER	THR ELEVATION	79
RAD 125.625, 127.525	HEATHROW RADAR	OBSTACLE ELEVATION	1087 AMSL (1008) (ABOVE THR)
ATIS 128.080, 113.750, 115.100	HEATHROW INFORMATION	BEARINGS ARE MAGNETIC	TRANSITION ALTITUDE 6000



AIRCRAFT UNABLE TO RECEIVE DME I-AA
Advise ATC. Equivalent radar ranges will be provided when established on the localiser approaching the nominal FAP and 4NM points.

NOTES
1 Aircraft will normally be radar vectored from the STAR Holding/Initial Approach Fixes.
2 Ranging information is provided by ILS-dedicated DME facilities. DME values derived to the nearest 0.1NM from VOR DME LON are also provided for the FAP and 4NM check altitude/height.

CHANGE (10/19): APP FREQUENCY 119.725 AMENDED TO 119.730.