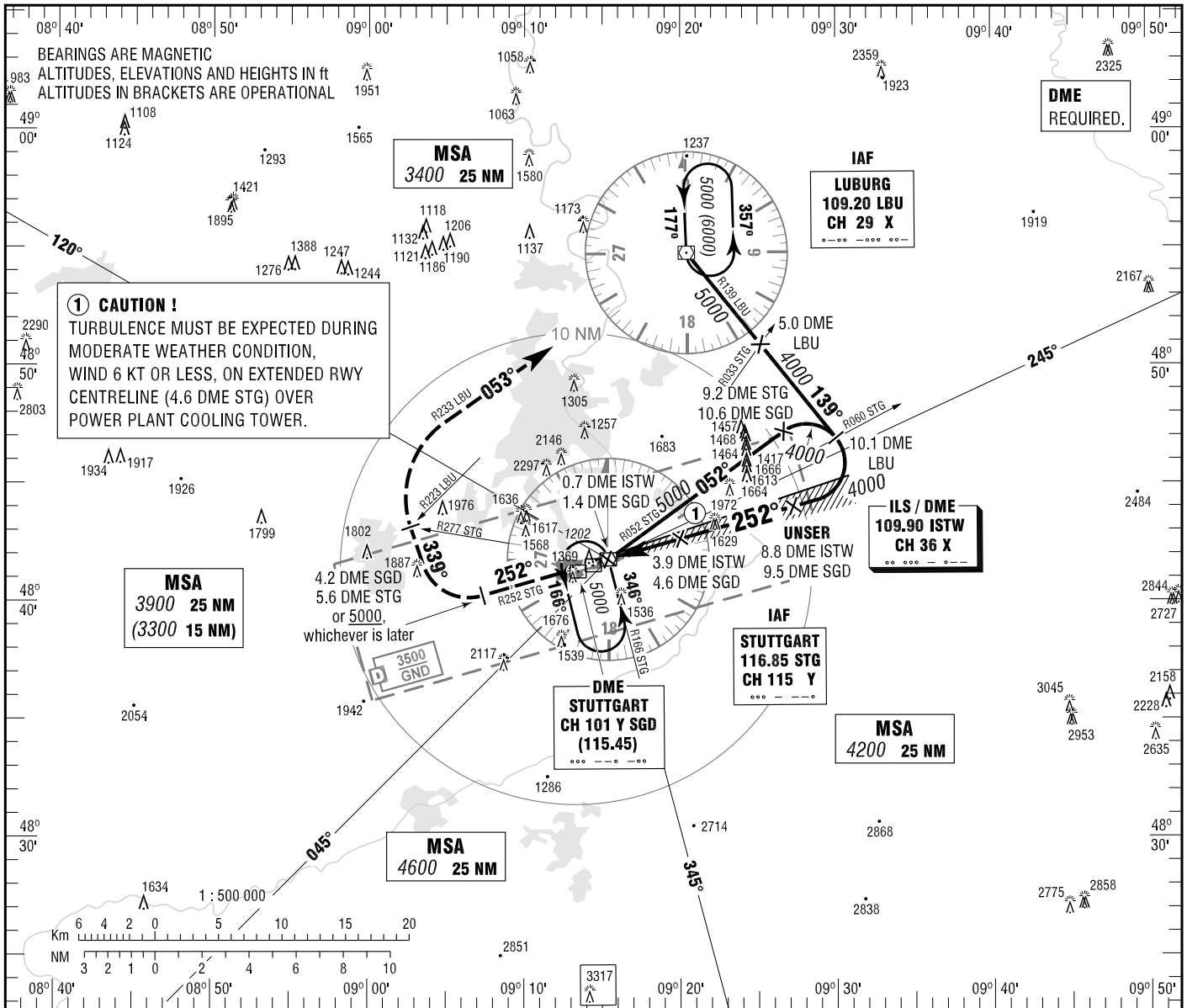


INSTRUMENT
APPROACH
CHART - ICAO

VAR 2° E
ELEV 1276
OCH RELATED TO
THR 25 ELEV 1181

STUTTGART ATIS 126.130
LANGEN RADAR 125.050
119.200
STUTTGART DIRECTOR 119.850
STUTTGART TOWER 118.805
STUTTGART GROUND 118.605

STUTTGART
ILS CAT II & III or LOC
RWY 25



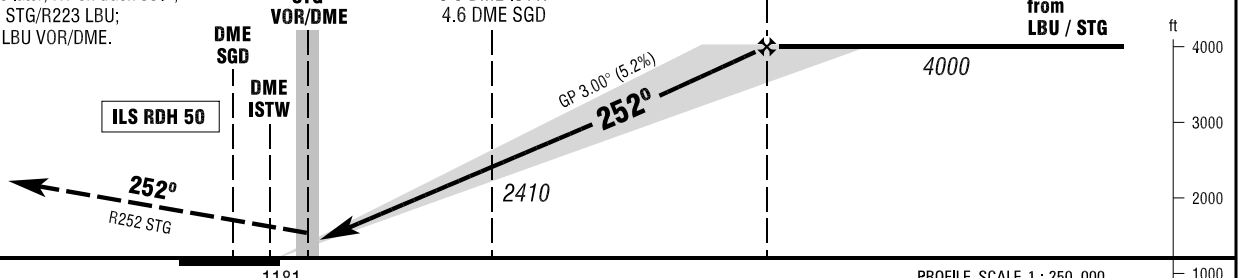
MISSED APPROACH PROCEDURE

Climb on R252 STG to 5000;
when crossing 4.2 DME SGD/5.6 DME STG
or 5000, whichever is later; RT on track 339°;
when crossing R277 STG/R223 LBU;
RT, on R233 LBU to LBU VOR/DME.

(MAPT LOC-DME)
0.7 DME ISTW
1.4 DME SGD

3.9 DME ISTW
4.6 DME SGD

(FAF LOC-DME)
UNSER
8.8 DME ISTW
9.5 DME SGD



OCA (OCH)	A	B	C	D	D _L
ILS/DME CAT I	1333 (152)	1343 (162)	1353 (172)	1362 (181)	
ILS/DME CAT II	1244 (63)	1261 (80)	1274 (93)	1287 (106)	
LOC-DME	1590 (410)	1590 (410)	1590 (410)	1590 (410)	

DME ISTW	2	3	4	5	6	7	8
DIST THR	1.8	2.8	3.8	4.8	5.8	6.8	7.8
ALTITUDE	1810	2130	2450	2760	3080	3400	3720

LOC-DME: Timing not authorized for defining the MAPT.

GS	kt	80	100	120	140	160	180
8.8 DME ISTW - THR (8.7 NM)	MIN:SEC	6:32	5:13	4:21	3:44	3:16	2:54
Rate of descent (5.2%)	ft / MIN	420	530	640	740	850	960

CAT IIIA AND CAT IIIB (MNM RVR 75m) APPROVED.

Correction: Communications.