

NUERNBERG
RWY 10/28

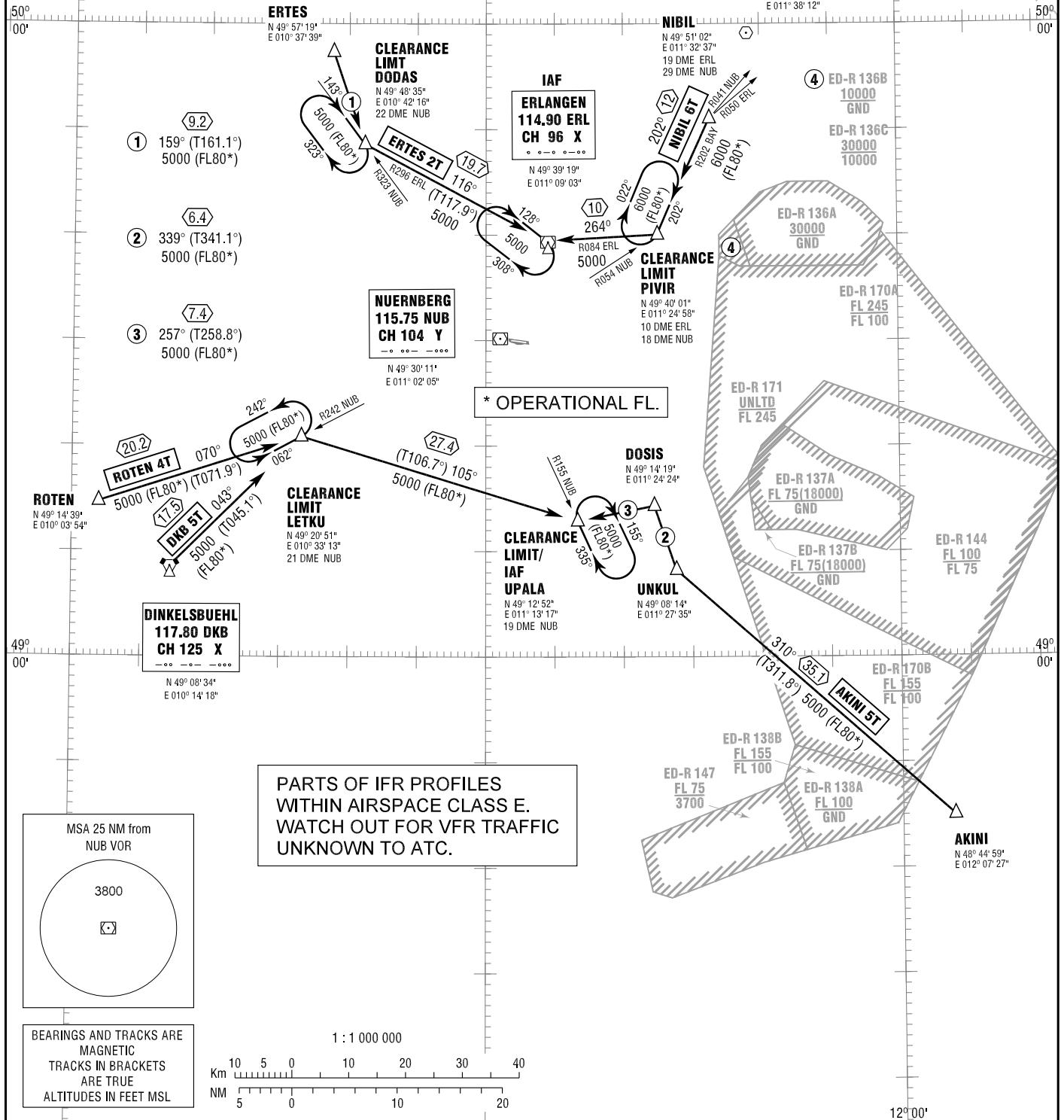
NUERNBERG ATIS 123.080
MUENCHEN RADAR 129.525

TRANSITION
ALTITUDE 5000
VAR 2° E

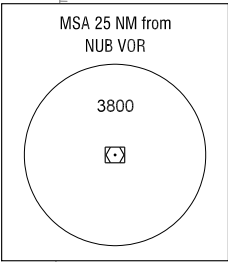
STANDARD ARRIVAL
CHART - INSTRUMENT
(STAR)

IN CASE OF RADIO COMMUNICATION FAILURE:
MAINTAIN LAST CLEARED FL UNTIL REACHING IAF.
- IN ERL HOLDING DESCENT TO 5000 FOR
STANDARD INSTRUMENT APPROACH.
- IN UPALA HOLDING DESCENT TO FL80,
PROCEED TO ERL VOR/DME,
ENTER ERL HOLDING, DESCENT TO 5000 FOR
STANDARD INSTRUMENT APPROACH.

BAYREUTH
110.60 BAY



PARTS OF IFR PROFILES
WITHIN AIRSPACE CLASS E.
WATCH OUT FOR VFR TRAFFIC
UNKNOWN TO ATC.



BEARINGS AND TRACKS ARE
MAGNETIC
TRACKS IN BRACKETS
ARE TRUE
ALTITUDES IN FEET MSL

