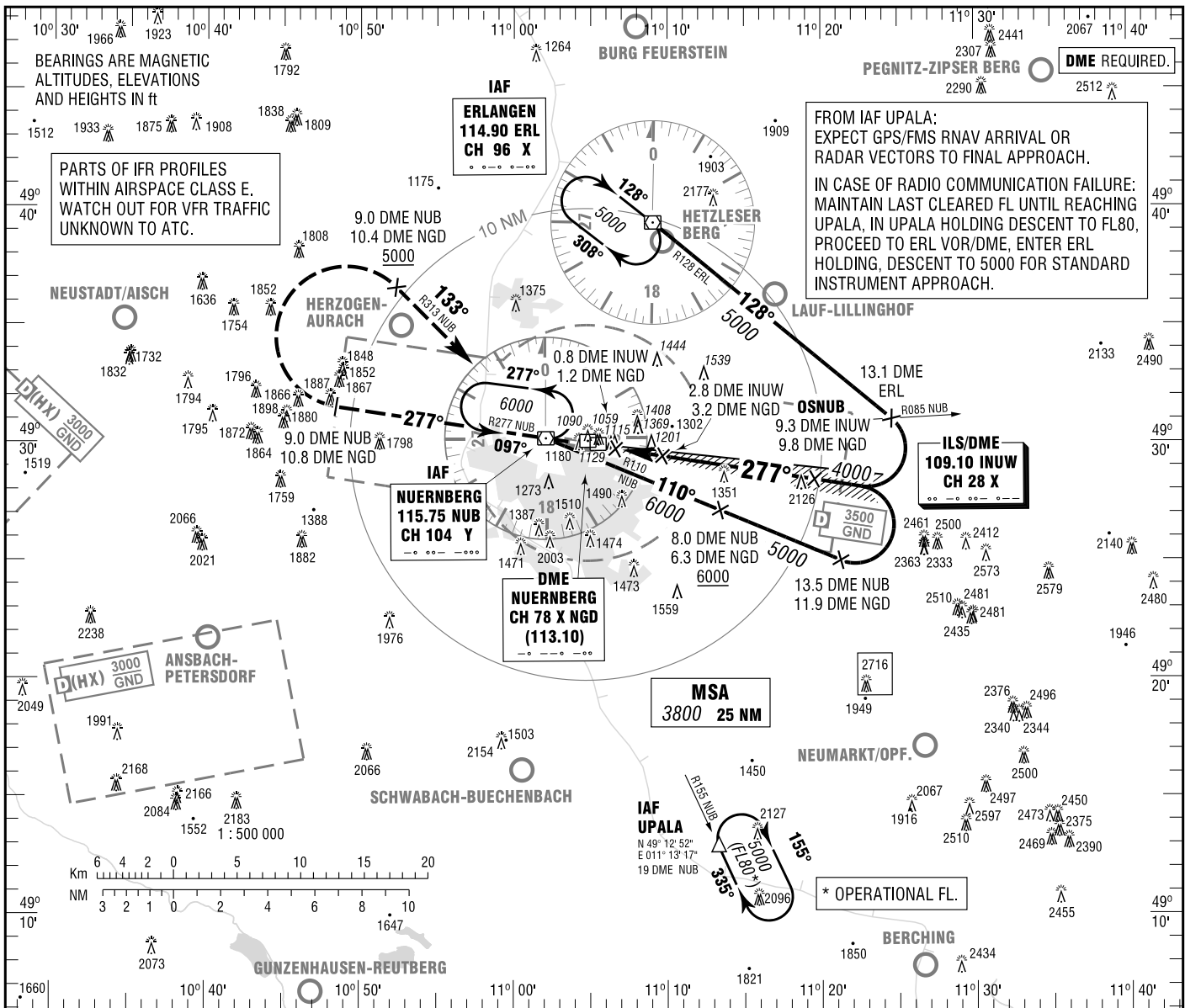


INSTRUMENT
APPROACH
CHART - ICAO

VAR 2° E
ELEV 1046
OCH RELATED TO
THR 28 ELEV 1046

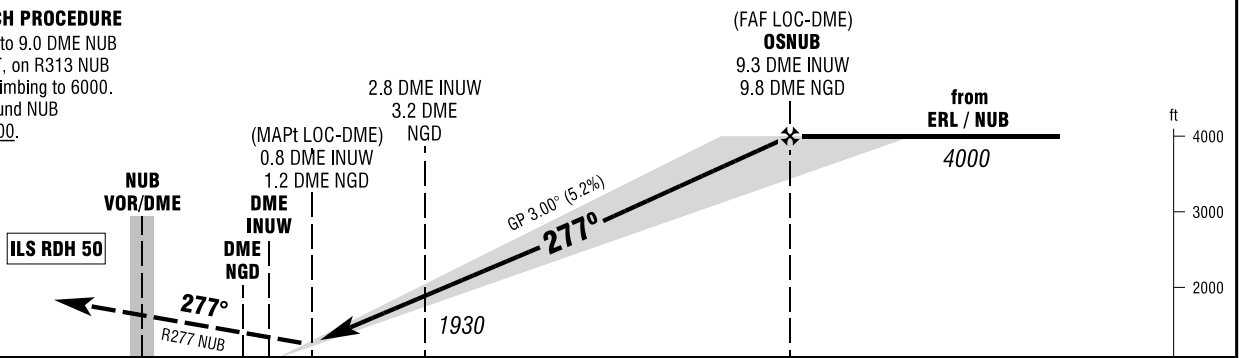
NUERNBERG ATIS 123.080
MUENCHEN RADAR 129.525
NUERNBERG TOWER 118.305
NUERNBERG GROUND 121.760

NUERNBERG
ILS CAT II & III or LOC Z
RWY 28



MISSED APPROACH PROCEDURE

Climb on R277 NUB to 9.0 DME NUB (10.8 DME NGD), RT, on R313 NUB to NUB VOR/DME, climbing to 6000. Cross 9.0 DME inbound NUB (10.4 DME NGD) 5000.



1022 1046 PROFILE SCALE 1 : 250 000
NM 6 5 4 3 2 1 0 1 2 3 4 5 6 7 8 9 10 11 12 13 14 NM

OCA (OCH)	A	B	C	D
ILS/DME CAT I	1246 (200)	1256 (210)	1280 (234)	1290 (244)
ILS/DME CAT II	1102 (56)	1118 (72)	1131 (85)	1145 (99)
LOC-DME	1450 (410)	1450 (410)	1450 (410)	1450 (410)
CIRCLING * OCH RELATED TO AD ELEV	1670 (620)	1710 (660)	1840 (800)	1940 (890)

DME INUW	2	3	4	5	6	7	8	9
DIST THR	1.8	2.8	3.8	4.8	5.8	6.8	7.8	8.8
ALTITUDE	1670	1990	2310	2630	2950	3270	3580	3900

LOC-DME: Timing not authorized for defining the MAPt.

GS	kt	80	100	120	140	160	180
OSNUB - THR (9.1 NM)	MIN:SEC	6:50	5:28	4:33	3:54	3:25	3:02
Rate of descent (5.2%)	ft / MIN	420	530	640	740	850	960

*NORTH OF AERODROME ONLY. CAT IIIA AND CAT IIIB (MM RVR 75M) APPROVED.

Correction: Communications, obstacles revised.