

LEIB/IBZ
IBIZA

JEPPESEN
18 AUG 17 **(11-3)**

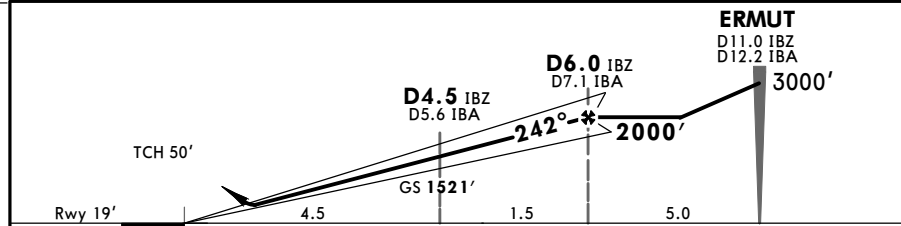
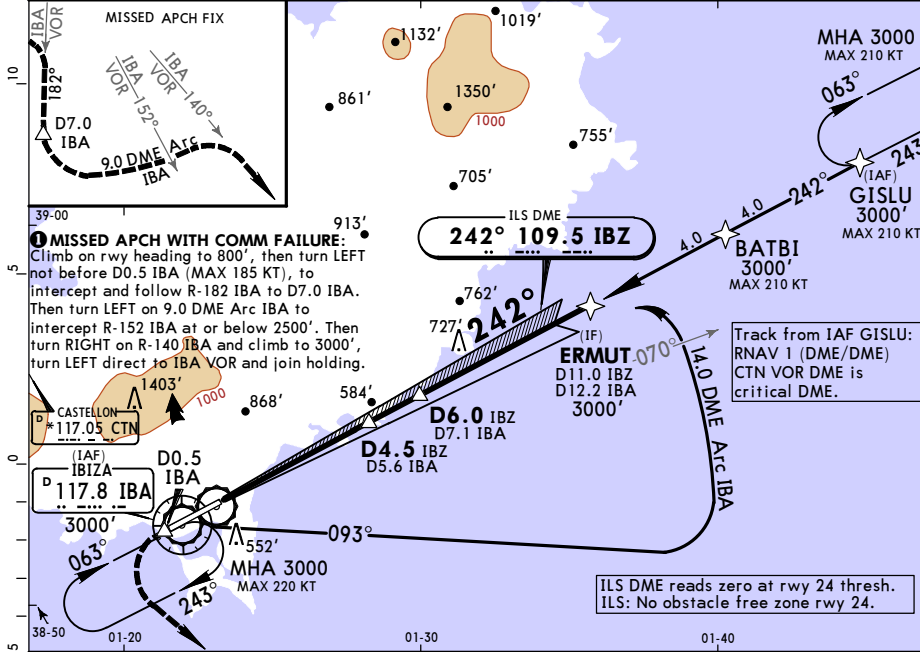
IBIZA, SPAIN
ILS Z Rwy 24

*ATIS 119.8	PALMA Control (APP) 134.825	*IBIZA Tower 118.5	*Ground 121.925
-----------------------	---------------------------------------	------------------------------	---------------------------

LOC IBZ 109.5	Final Apch Crs 242°	GS D4.5 IBZ 1521' (1502')	ILS DA(H) Refer to Minimums	Apt Elev 24' Rwy 19'	2800
----------------------------	----------------------------------	----------------------------------------	--------------------------------------	-------------------------	------

MISSED APCH: Climb on rwy heading to 800', then turn LEFT not before D0.5 IBA (MAX 185 KT) to intercept and follow R-182 IBA to D7.0 IBA. Then turn LEFT on 9.0 DME Arc IBA to intercept R-152 IBA at or below 2500'. Then turn RIGHT on R-140 IBA and climb to 3000', then as directed. **①**

Alt Set: hPa Rwy Elev: 1 hPa Trans level: By ATC Trans alt: 6000'
RNAV 1 approval required between IAF and IF.



Gnd speed-Kts	70	90	100	120	140	160	HIALS PAPI - PAPI	Refer to Missed Apch above
GS 3.00°	372	478	531	637	743	849		

Standard				STRAIGHT-IN LANDING RWY 24		CIRCLE-TO-LAND	
ILS				A: 259' (240') C: 279' (260')		Not authorized	
DA(H)				B: 271' (252') D: 290' (271')		North of runway	
FULL				ALS out		Max Kts	MDA(H) VIS
A	RVR 550m			RVR 1200m	100	940' (916')	1500m
B					135	940' (916')	1600m
C	RVR 600m			RVR 1300m	180	1040' (1016')	2400m
D					205	1040' (1016')	3600m

PANS OPS **①** W/o HUD/AP/FD: RVR 750m