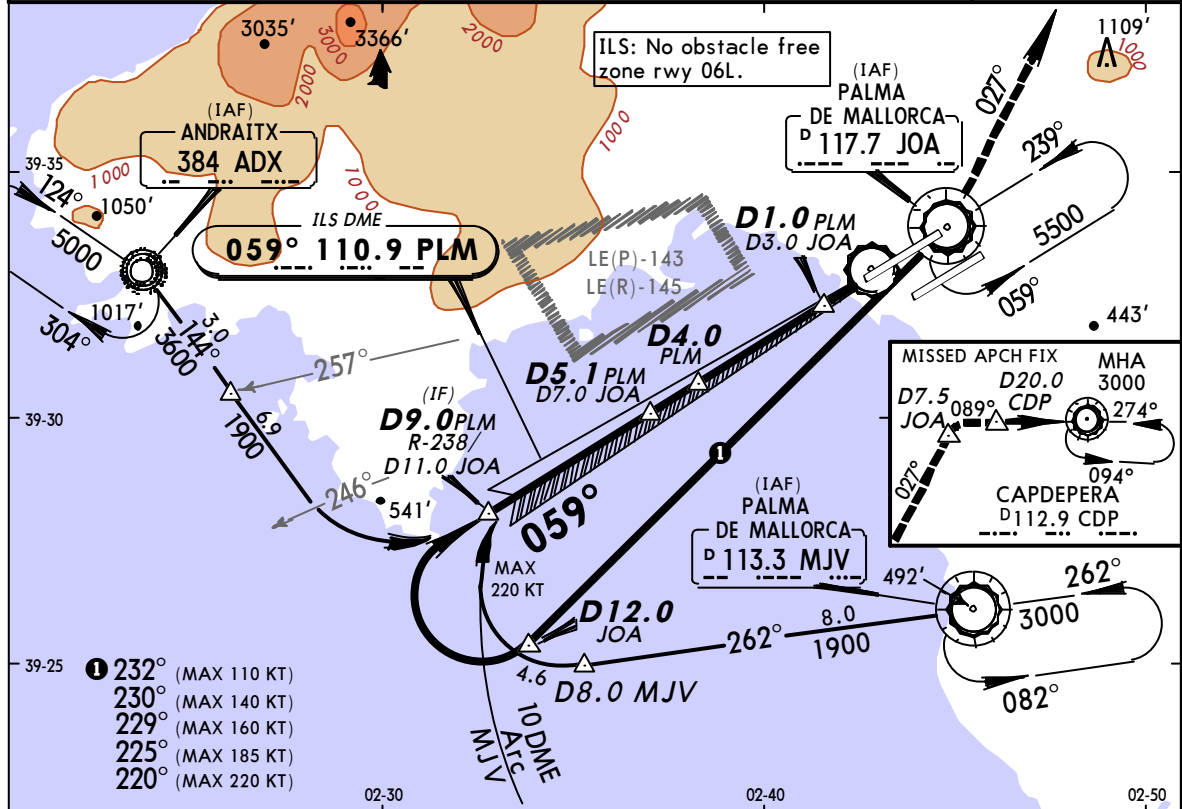
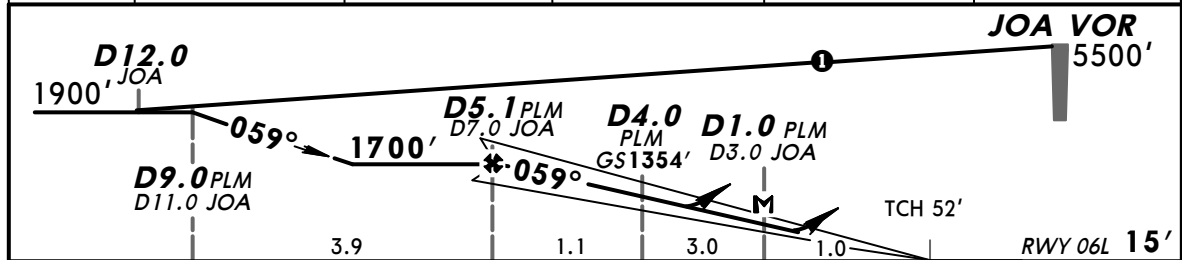


**LEPA/PMI**  
**PALMA DE MALLORCA** 4 MAY 12 (11-1)  
**ILS or LOC Rwy 06L**

ATIS 119.25	PALMA Approach(R) 118.95 119.15 119.4			PALMA Tower (ARR) 118.3	Ground 121.9
LOC PLM 110.9	Final Apch Crs 059°	GS D4.0 PLM 1354' (1339')	ILS DA(H) Refer to Minimums	Apt Elev 27' RWY 15'	
<b>MISSED APCH:</b> Climb via JOA VOR to 2000'. Turn LEFT (MAX 185 KT) to intercept R-027 JOA. At D7.5 JOA turn RIGHT (MAX 210 KT) to intercept R-269 inbound CDP VOR. At D20.0 CDP climb to 3000' and join holding.					<p>MSA JOA VOR</p>
Alt Set: hPa    Rwy Elev: 1 hPa    Trans level: By ATC    Trans alt: 6000' 1. VOR, DME and ADF required.    2. ILS DME reads zero at rwy 06L threshold.					



LOC (GS out)	PLM DME	5.0	4.0	3.0	2.0
	ALTITUDE	1740'	1400'	1070'	740'



Gnd speed-Kts	70	90	100	120	140	160				
ILS GS	3.00°	377	484	538	646	753	861			
LOC Descent Angle	3.10°	384	494	548	658	768	878			
MAP at D1.0 PLM/D3.0 JOA										

<b>Standard</b> STRAIGHT-IN LANDING RWY 06L							<b>LOC (GS out)</b>		<b>CIRCLE-TO-LAND</b>	
Missed apch climb gradient mim 3.0 %			ILS    Missed apch climb gradient mim 2.5 %				DA(H) 450' (435')		Not authorized Northwest of rwy 06L/24R	
A: 255' (240') C: 275' (260') B: 265' (250') D: 285' (270')			A: 350' (335') C: 370' (355') B: 360' (345') D: 380' (365')							
FULL    Limited    ALS out			FULL    Limited    ALS out				ALS out			
A	RVR 550m		RVR 1200m	RVR 800m	RVR 1500m			Max Kts	MDA(H)	VIS
B		RVR 750m	RVR 1300m	RVR 900m	RVR 1600m	RVR 1300m	RVR 1500m	100	610' (583')	1500m
C							RVR 2000m	135	820' (793')	1600m
D	RVR 600m			RVR 1000m	RVR 1700m			180	1210' (1183')	2400m
								205	1510' (1483')	3600m

CHANGES: Arrival route withdrawn.

© JEPPESEN, 2000, 2012. ALL RIGHTS RESERVED.